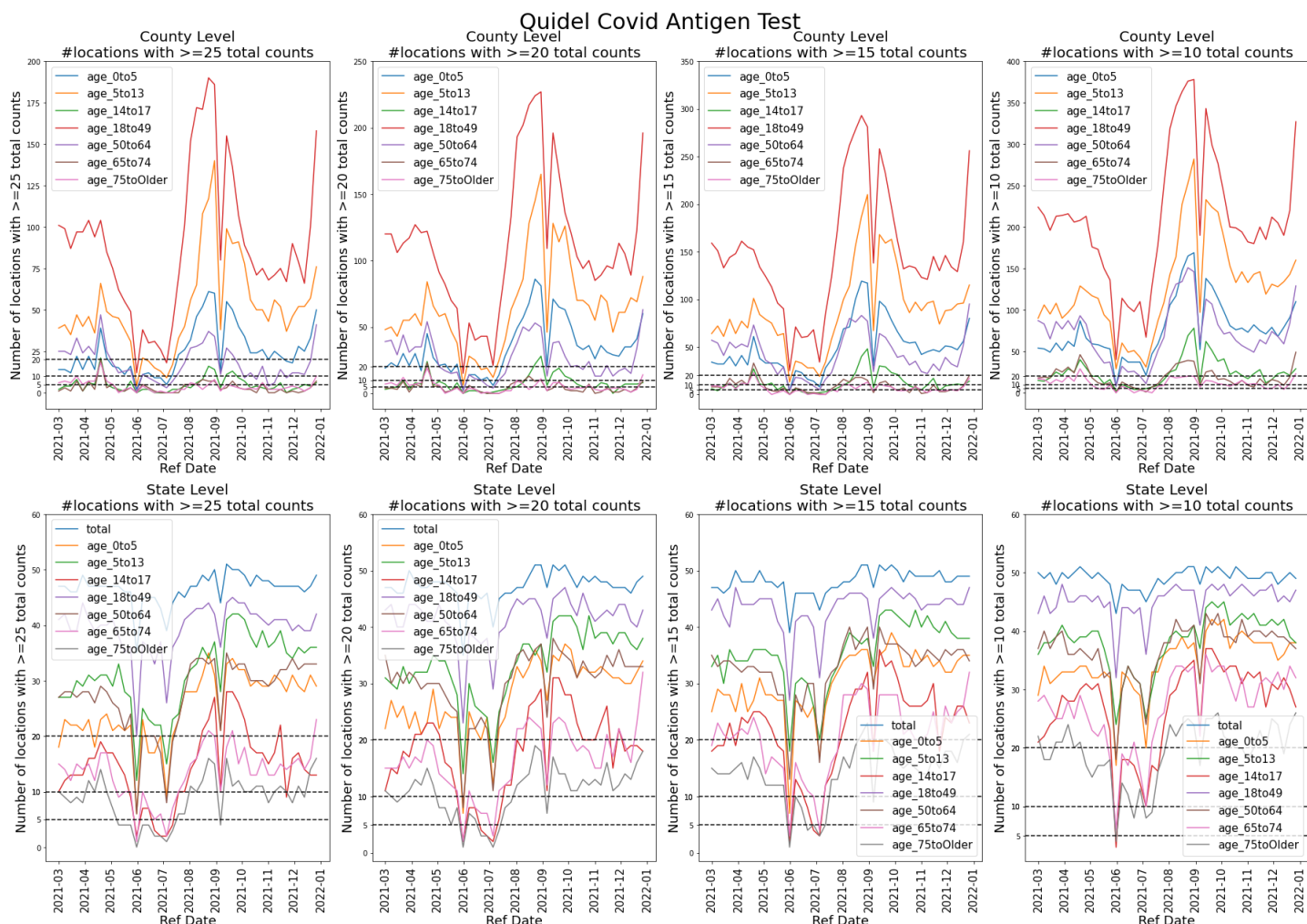


Check available counties with different threshold

Without borrowing:



Check time-wise spearman correlation

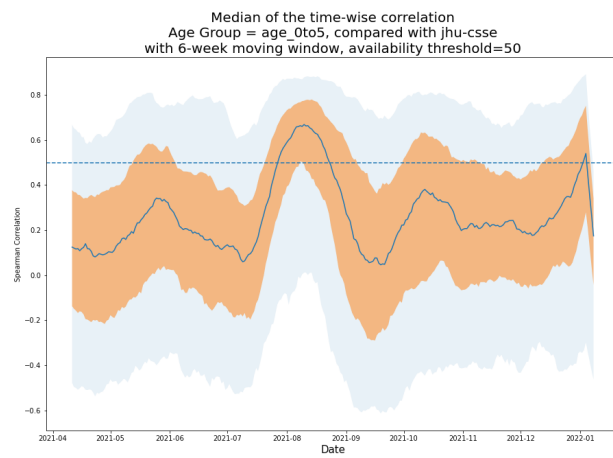
The time-wise correlation is calculated:

- For each county with more than 100 days available from 2021-03-01 to 2022-01-08
- For each age group signal
- With a 6-week moving window for each date
- Based on the data with a fixed as_of date 2022-01-08

The gray and light gray areas indicate 0.05, 0.095 and 0.25, 075 quantiles separately

With borrowing:

availability threshold = 50



availability threshold = 20

